



2 bed bungalow to buy in FY8

Gretdale Avenue, Lytham St. Annes,
Lancashire, FY8 2EE

£175,000 Starting Bid

 x2  x1  x2

Tenure

Leasehold

Driveway parking

Property features

- ✓ Being Sold via Secure Sale Online Bidding - T&C's Apply
- ✓ No Chain
- ✓ Sought After Location
- ✓ Extended Detached True
- ✓ EPC Rating E

Key Information

- ✓ Council Tax: Band D
- ✓ EPC Rating: E
- ✓ Heating supply: Gas

Description

We are delighted to bring this good size bungalow to the market.

Welcome to Gretdale Avenue, this extended detached true bungalow is located in a sought after residential area; close to transport links and local amenities. The property itself is well proportioned and offers good size rooms throughout, as well as a large plot.

Council Tax Band: D

Tenure: Leasehold

Length of Lease: 929

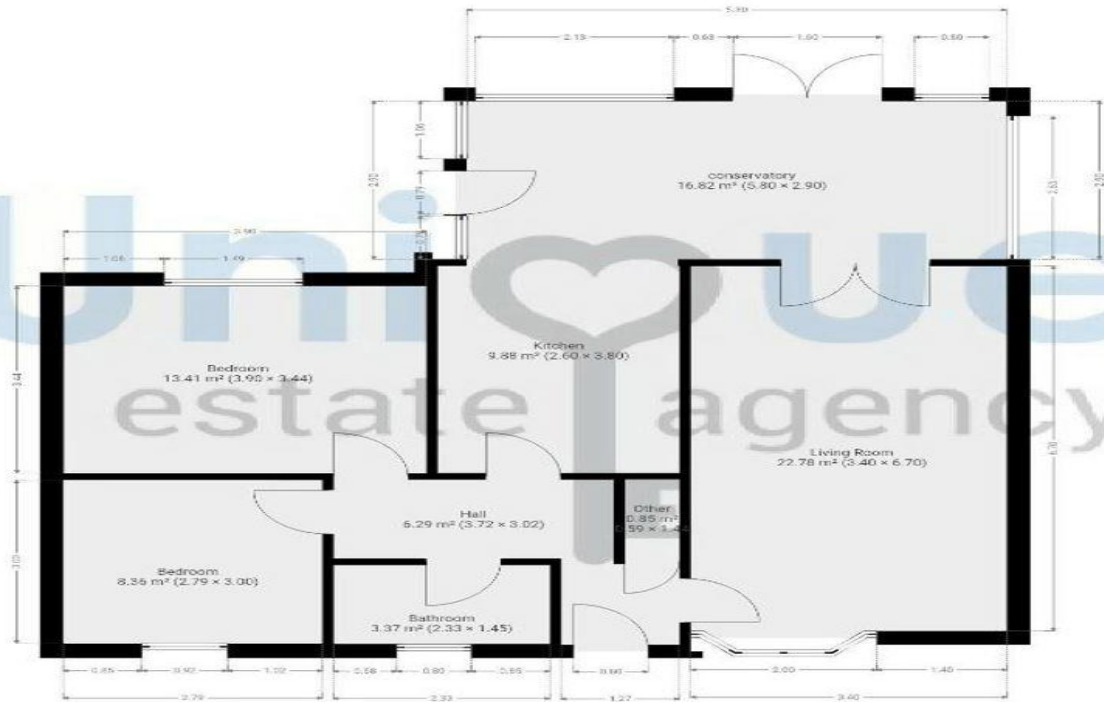
Annual Ground Rent Amount: £12.00

Price: Starting Bid £175,000

Property Type: Bungalow

Parking: Driveway

Heating: Gas



THIS FLOORPLAN IS PROVIDED WITHOUT WARRANTY OF ANY KIND. SENSORIA DISCLAIMS ANY WARRANTY INCLUDING, WITHOUT LIMITATION, SATISFACTORY QUALITY OR ACCURACY OF DIMENSIONS.

Energy Efficiency Rating		Current	Potential
<i>Very energy efficient - lower running costs</i>			
(92-100) A			
(81-91) B			
(69-80) C			71
(55-68) D			
(39-54) E		48	
(21-38) F			
(1-20) G			
<i>Not energy efficient - higher running costs</i>			
England, Scotland & Wales		EU Directive 2002/91/EC	

Gretdale Avenue, Lytham St. Annes, Lancashire, FY8 2EE

Contact your local branch today for more information on this property:

27-28 Tuesday Market Place, King's Lynn, Norfolk, PE30 1JJ,
TBC<http://www.norfolkpropertyauctions.com>

These particulars, whilst believed to be accurate are set out as a general outline only for guidance and do not constitute any part of an offer or contract. Intending purchasers should not rely on them as statements of representation of fact, but must satisfy themselves by inspection or otherwise as to their accuracy. No person in this firm's employment has the authority to make or give any representation or warranty in respect of the property.

