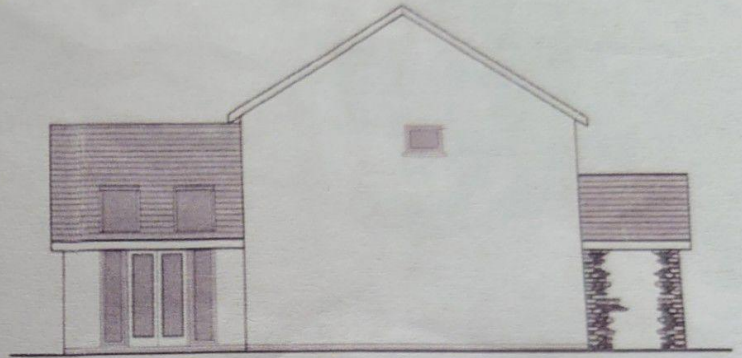
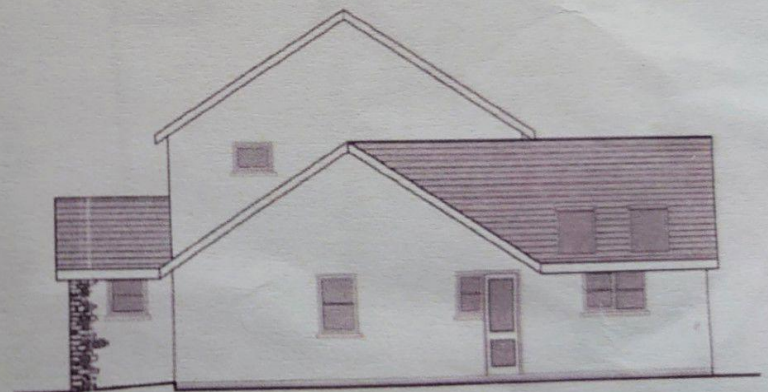


**EDRYCHIAD BLAEN**  
*front elevation*



**EDRYCHIAD OCHR**  
*side elevation*



**EDRYCHIAD OCHR**  
*side elevation*



**Auction**

## Land & Development in SY23

Primrose Hill, Llanbadarn Fawr,  
Aberystwyth, Ceredigion, SY23 3AT

**£100,000** Starting Bid

Off Street parking

## Property features

- ✓ Sold via secure sale
- ✓ Close to local amenities
- ✓ Close to transport links
- ✓ Close location to St Georges

## Description

For sale via secure sale online bidding - terms and conditions apply.

Located in Llanbadarn Fawr, Aberystwyth, Ceredigion. This plot of land is situated close to local amenities such as shops, trainlines and tourist attractions.

The site measures 0.286 acres with a perimeter of 446.818ft

This land and caravan is situated close to Aberystwyth Holiday Village and is within a close distance from food shops.

Please note we have not inspected this site.

Price: Starting Bid £100,000

Property Type: Land & Development

Business Type: Other/Unspecified

Parking: Off Street

## Location

Located in Llanbadarn Fawr, Aberystwyth, Ceredigion. This plot of and is situated close to local amenities such as shops, trainlines and tourist attractions.

---

## Tenure

Freehold. Title numbers CYM807154

---

## Accommodation

A caravan with land beside for sale

---

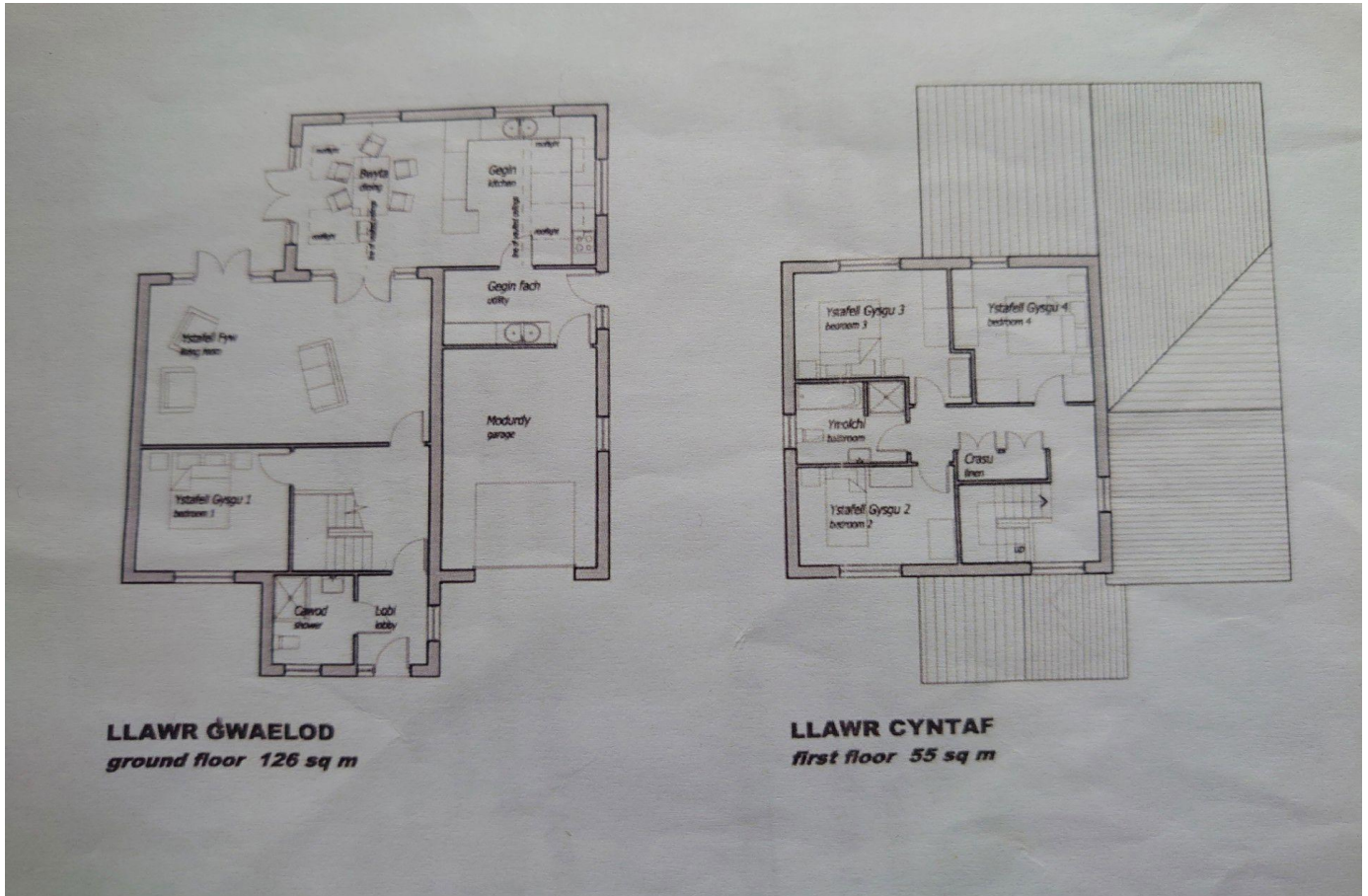
## Planning permission

The site has been granted planning permission on 10-06-2025 for the The Orchards Primrose Hill, Llanbadarn Fawr, Aberystwyth, Ceredigion, SY23 3AT. Planning references A250270 and A140137

---

## Additional information

For further information please contact our office directly on 0191 737 1154, or alternatively via email on [commercial@pattinson.co.uk](mailto:commercial@pattinson.co.uk). With regards to viewing subject site, this is to be done strictly by appointment.



Primrose Hill, Llanbadarn Fawr, Aberystwyth, Ceredigion, SY23 3AT

Contact your local branch today for more information on this property:

**27-28 Tuesday Market Place, King's Lynn, Norfolk, PE30 1JJ,**  
**TBC<http://www.norfolkpropertyauctions.com>**

These particulars, whilst believed to be accurate are set out as a general outline only for guidance and do not constitute any part of an offer or contract. Intending purchasers should not rely on them as statements of representation of fact, but must satisfy themselves by inspection or otherwise as to their accuracy. No person in this firm's employment has the authority to make or give any representation or warranty in respect of the property.

