



3 bed terraced house to buy in

Whitley Road, ., Whitley Bay, Tyne and
Wear, NE26 2NF

£365,000

🏠 x3 🚗 x1 🚲 x1

Tenure

Freehold

On Street parking

Property features

- ✓ Three Bedroom Terraced House.
- ✓ Original Features.
- ✓ Walking distance to the beach
- ✓ Excellent Transport Links.
- ✓ EPC Rating E

Key Information

- ✓ Council Tax: Band C
- ✓ EPC Rating: E
- ✓ Heating supply: Gas

Description

This charming period three bedroom terraced home retains many original features while offering beautifully presented, well-proportioned accommodation, making it an ideal family home. The property has been significantly improved by the current owner, including a professional replacement of the heating and hot water system with a modern boiler and radiators, a complete refurbishment of the kitchen, and comprehensive redecoration throughout. Original wooden floors have been carefully restored, stripped, sanded and refinished, enhancing the home's character while providing a stylish, contemporary finish.

The property's welcoming entrance hallway leads through to two elegant reception rooms and a fitted kitchen. To the first floor, there are three generously sized bedrooms, a family bathroom with separate shower enclosure, and an additional separate W.C.

Externally, the property benefits from a private rear yard, along with a small garden to the front.

Ideally positioned on a sought-after street, the property is located close to Whitley Bay's beautiful coastline and seafront, with a wide range of local shops, amenities, and excellent transport links all within easy reach.

Council Tax Band: C

Tenure: Freehold

Price: £365,000

Property Type: Terraced House

Parking: On Street

Heating: Gas

Living Room

4.64m x 5.43m (15'2" x 17'9")

A bright living room is positioned to the front of the property, featuring a bay window overlooking the front garden, complemented by high ceilings and traditional cornicing.



Dining Room

3.93m x 3.79m (12'10" x 12'5")

A separate dining room, offering a versatile space perfect as a second living area, dining room, or home office.



Kitchen

3.31m x 4.78m (10'10" x 15'8")

Located at the rear of the property, the kitchen is fitted with a range of floor and wall units with wooden worktops and offers direct access to the rear yard.



Bedroom 1

3.55m x 4.51m (11'7" x 14'9")

The main bedroom is located at the front of the property, a light and spacious room featuring a charming fireplace.



Bedroom 2

3.99m x 3.83m (13'1" x 12'6")

The second double bedroom is located at the rear of the property, a generous and bright room filled with natural light.



Bedroom 3

2.37m x 3.43m (7'9" x 11'3")

A good-sized third bedroom is positioned at the front of the property, offering a versatile and comfortable space.



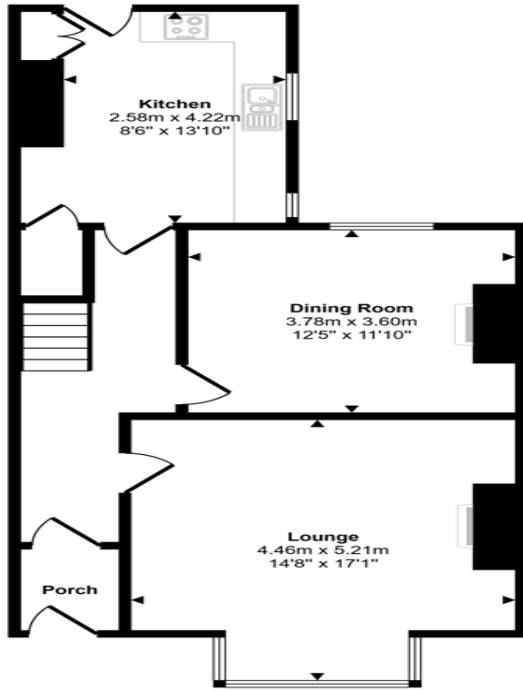
Bathroom

3.16m x 3.05m (10'4" x 10'0")

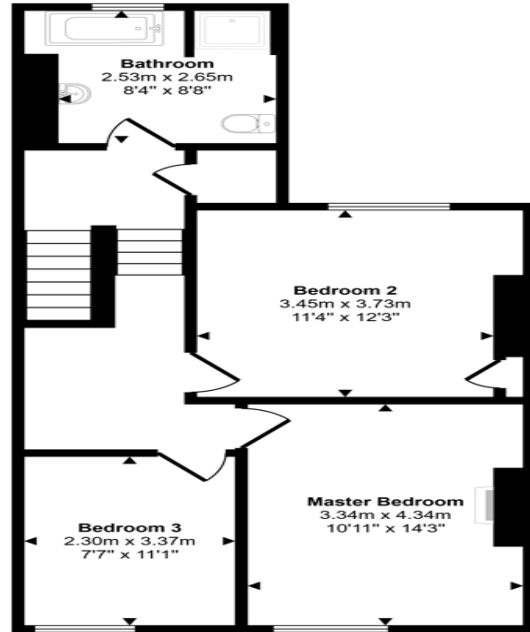
The bathroom is located at the rear of the property and is fitted with a white suite and a separate shower cubicle. In addition, there is a convenient W.C. off the hallway.



Approx Gross Internal Area
121 sq m / 1302 sq ft



Ground Floor
Approx 61 sq m / 662 sq ft



First Floor
Approx 59 sq m / 640 sq ft

This floorplan is only for illustrative purposes and is not to scale. Measurements of rooms, doors, windows, and any items are approximate and no responsibility is taken for any error, omission or mis-statement. Icons of items such as bathroom suites are representations only and may not look like the real items. Made with Made Snappy 360.

Energy Efficiency Rating		
	Current	Potential
<i>Very energy efficient - lower running costs</i>		
(92-100) A		
(81-91) B		83
(69-80) C		
(55-68) D		
(39-54) E	49	
(21-38) F		
(1-20) G		
<i>Not energy efficient - higher running costs</i>		
England, Scotland & Wales	EU Directive 2002/91/EC	

Whitley Road, ., Whitley Bay, Tyne and Wear, NE26 2NF

Contact your local branch today for more information on this property:

27-28 Tuesday Market Place, King's Lynn, Norfolk, PE30 1JJ,
TBC<http://www.norfolkpropertyauctions.com>

These particulars, whilst believed to be accurate are set out as a general outline only for guidance and do not constitute any part of an offer or contract. Intending purchasers should not rely on them as statements of representation of fact, but must satisfy themselves by inspection or otherwise as to their accuracy. No person in this firm's employment has the authority to make or give any representation or warranty in respect of the property.

