



HMO in PL4

Sea View Terrace, Plymouth, Devon, PL4
8RN

£270,000 Starting Bid

Tenure

Freehold

On Street parking

Property features

- ✓ Fully Licenced HMO
- ✓ Rental income £38,000
- ✓ 7 Bedrooms
- ✓ Investment Opportunity
- ✓ Freehold Property

Description

For sale via secure sale online bidding - terms and conditions apply.

This fully occupied and licensed House in Multiple Occupation (HMO) presents an excellent turnkey investment opportunity for discerning investors seeking a high-yielding and relatively hands-off addition to their portfolio.

The property offers seven generously sized double bedrooms and is ideally positioned within easy walking distance of Plymouth University, the vibrant City Centre, and the ever-popular Mutley Plain. This highly convenient location ensures strong and consistent tenant demand, with a wide range of shops, restaurants, bars, and transport links all close by.

Arranged over three floors, the property provides spacious and well-planned accommodation throughout. The ground floor comprises two double letting rooms, along with a large communal kitchen and lounge area that serves as a social hub for residents. A convenient downstairs W.C. and a separate utility room complete the ground floor.

The first floor features three further double letting rooms, as well as two modern shower rooms, each fitted with a walk-in shower, W.C., and wash basin.

On the second floor, there are two additional double bedrooms along with a delightful roof terrace, offering residents a private outdoor space to relax and unwind.

Externally, the property benefits from a small communal courtyard, providing additional outside space for tenants. There is also convenient on-street permit parking available to the front of the property.

This substantial seven-bedroom HMO represents a rare opportunity to acquire a fully licensed investment property in a prime location, currently generating an annual income of approximately £38,000.

Internal viewings are highly recommended to fully appreciate the size and potential of this impressive property.

Please note the property would benefit from some maintenance, which is reflected in the asking price.

Some furniture belonging to tenants has been digitally removed from the photographs using AI to better demonstrate the scale and proportions of the rooms.

Price: Starting Bid £270,000

Property Type: HMO

Business Type: Residential Investments

Parking: On Street

Description

A fully occupied and licensed House in Multiple Occupation (HMO)



Location

Within walking distance of Plymouth University, the vibrant City Centre, and the ever-popular Mutley Plain.



Tenure

Freehold - TITLE NUMBER: DN170323



Additional Information

For further information please contact our office directly on 0191 737 1154, or alternatively via email on commercial@pattinson.co.uk. With regards to viewing subject property, this is to be done strictly by appointment.



Sea View Terrace, Plymouth, Devon, PL4

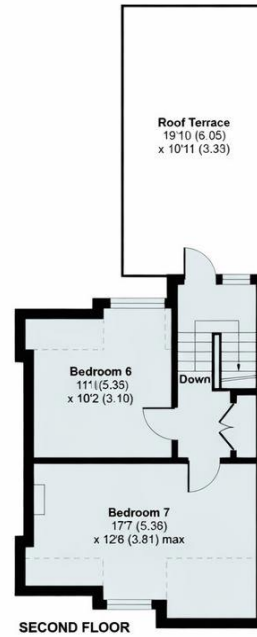
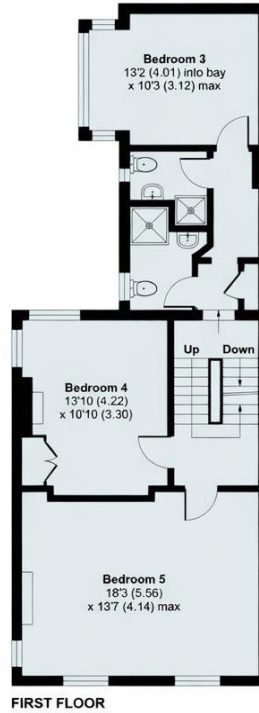
Approximate Area = 1895 sq ft / 176 sq m

Limited Use Area(s) = 6sq ft , 6 sq m

Total = 1957 sq ft/ 182s m

For identification only - Not to scale

Denotes restricted head height



Sea View Terrace, Plymouth, Devon, PL4 8RN

Contact your local branch today for more information on this property:

27-28 Tuesday Market Place, King's Lynn, Norfolk, PE30 1JJ,
TBC<http://www.norfolkpropertyauctions.com>

These particulars, whilst believed to be accurate are set out as a general outline only for guidance and do not constitute any part of an offer or contract. Intending purchasers should not rely on them as statements of representation of fact, but must satisfy themselves by inspection or otherwise as to their accuracy. No person in this firm's employment has the authority to make or give any representation or warranty in respect of the property.

