



2 bed flat to buy in NE29

Chirton Dene Quays, North Shields, Tyne and Wear, NE29 6YW

£109,950

🏠 x2 🚗 x1 🚲 x1

Tenure

Leasehold

Allocated parking

Property features

- ✓ No onward chain
- ✓ Popular Location
- ✓ Two Bedrooms
- ✓ Allocated parking
- ✓ EPC Rating C

Key Information

- ✓ Council Tax: Band B
- ✓ EPC Rating: C
- ✓ Heating supply: Gas

Description

Accessed via a secure communal entrance, this well-presented mid-floor apartment offers spacious and modern accommodation throughout. The property briefly comprises an entrance lobby leading to a welcoming hallway, a contemporary three-piece bathroom/WC, and two generously sized bedrooms, ideal for both relaxation and home working.

The bright open-plan lounge/diner is filled with natural light, creating an inviting living space, while the adjoining kitchen is fitted with a range of wall and base units and includes an integrated oven and hob.

Externally, residents benefit from a private car park with an allocated parking space, offering both convenience and peace of mind.

Perfectly positioned close to the Marina, this attractive apartment is located within a sought-after purpose-built development, surrounded by scenic parkland and picturesque riverside walks, providing a peaceful yet well-connected lifestyle.

Ideally suited to commuters, the property enjoys excellent transport links via the A19, Tyne Tunnel, and A1058 Coast Road, allowing easy access to Newcastle city centre and the coast. Local amenities include the Royal Quays Shopping Outlet, as well as a variety of popular bars and restaurants.

Council Tax Band: B

Tenure: Leasehold

Length of Lease: 972

Price: £109,950

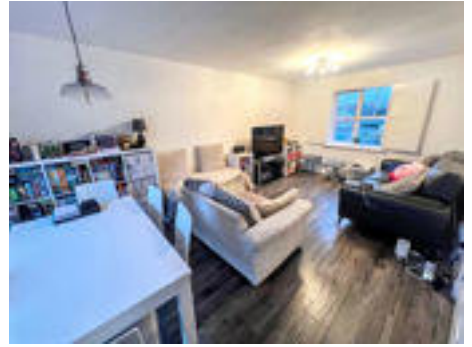
Property Type: Flat

Parking: Allocated

Heating: Gas

Lounge Diner

5.90m x 3.30m (19'4" x 10'9")



Dining Area



Lounge area



Bathroom



Kitchen



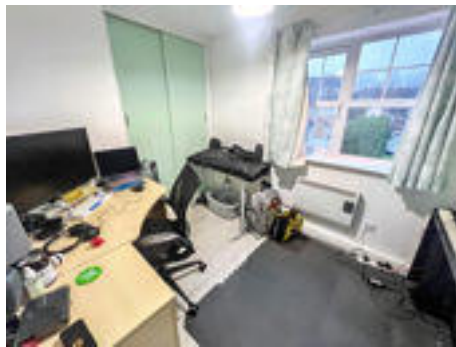
Main bedroom

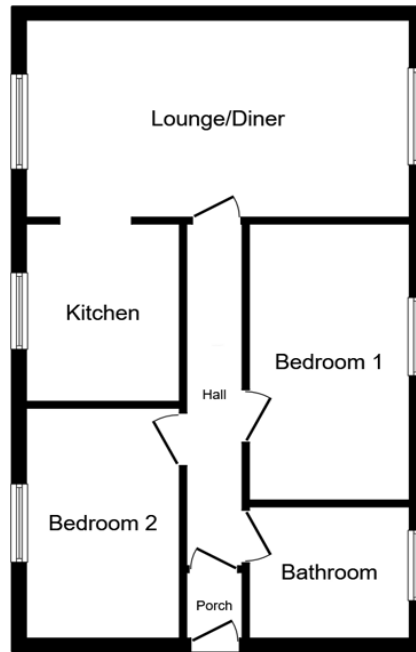
3.50m x 2.80m (11'5" x 9'2")



Bedroom Two


2.60m x 2.20m (8'6" x 7'2")





Floor Plan

This floor plan is for illustrative purposes only. It is not drawn to scale. Any measurements, floor areas (including any total floor area), openings and orientations are approximate. No details are guaranteed, they cannot be relied upon for any purpose and do not form any part of any agreement. No liability is taken for any error, omission or misstatement. A party must rely upon its own inspection(s). Powered by www.Propertybox.io

Energy Efficiency Rating		Current	Potential
<i>Very energy efficient - lower running costs</i>			
(92-100) A			
(81-91) B			
(69-80) C		75	78
(55-68) D			
(39-54) E			
(21-38) F			
(1-20) G			
<i>Not energy efficient - higher running costs</i>			
England, Scotland & Wales		EU Directive 2002/91/EC 	

Chirton Dene Quays, North Shields, Tyne and Wear, NE29 6YW

Contact your local branch today for more information on this property:

27-28 Tuesday Market Place, King's Lynn, Norfolk, PE30 1JJ,
TBC<http://www.norfolkpropertyauctions.com>

These particulars, whilst believed to be accurate are set out as a general outline only for guidance and do not constitute any part of an offer or contract. Intending purchasers should not rely on them as statements of representation of fact, but must satisfy themselves by inspection or otherwise as to their accuracy. No person in this firm's employment has the authority to make or give any representation or warranty in respect of the property.

