



## 2 bed apartment to buy in NE8

Worsdell Drive, Ochre Yards, Gateshead,  
Tyne and Wear, NE8 2DA

**£180,000** Offers Over

🏠 x2 🚗 x2 🚲 x1

Tenure

**Leasehold**

Allocated parking

## Property features

- ✓ Second Floor Apartment
- ✓ Two Bedrooms Master En-Suite
- ✓ Allocated Parking
- ✓ UPVC Double Glazing
- ✓ EPC Rating C

## Key Information

- ✓ Council Tax: Band C
- ✓ EPC Rating: C
- ✓ Heating supply: Electric

## Description

Situated in the popular Railway Quarter, this impressive apartment is a true credit to its current owners, who have created a superb modern living space finished to a high standard throughout. Ideally located within easy reach of Newcastle City Centre and Gateshead town centre, the property benefits from excellent rail, metro, bus, and road links, perfect for commuters.

The accommodation briefly comprises a secure communal entrance with intercom system, welcoming hallway, and a contemporary open-plan lounge, dining, and kitchen area. The kitchen features integrated appliances and provides access to a private balcony.

There are two well-proportioned bedrooms, with the principal bedroom benefitting from a stylish en suite, alongside a modern family bathroom. Additional features include UPVC double glazing, electric heating, and allocated parking.

Council Tax Band: C

Tenure: Leasehold

Length of Lease: 990

Price: Offers Over £180,000

Property Type: Apartment

Parking: Allocated

Heating: Electric

## Communal Entrance

Security entrance system, lift and stairs to all floors



## Hallway

Two built in storage cupboards, one which houses the washer/dryer machine, electric radiator



## Lounge/Kitchen

6.00m x 4.50m (19'8" x 14'9")



## Lounge Area

UPVC double glazed door and side panels allowing lots of natural light accessing the balcony, rotary ceiling fan, electric radiator



## Kitchen/Dining Area

Fitted in a range of grey gloss wall and base units with built in microwave, ceramic hob and built in electric oven with an extractor hood over, integrated fridge and freezer and dishwasher, under unit lighting, electric radiator



## Bedroom One

5.20m x 2.80m (17'0" x 9'2")

UPVC double glazed window, electric radiator, LED ceiling light with integral remotely operated fan



## En-Suite

1.80m x 2.00m (5'10" x 6'6")

Three piece suite comprising WC, pedestal wash basin, corner shower unit with mains fed shower, fitted mirrored panel, part tiled, heated towel rail, motion operated light



## Bedroom Two

2.50m x 3.50m (8'2" x 11'5")

UPVC double glazed window, electric radiator, LED ceiling light with integral remotely operated fan



## Family Bathroom

1.70m x 3.00m (5'6" x 9'10")

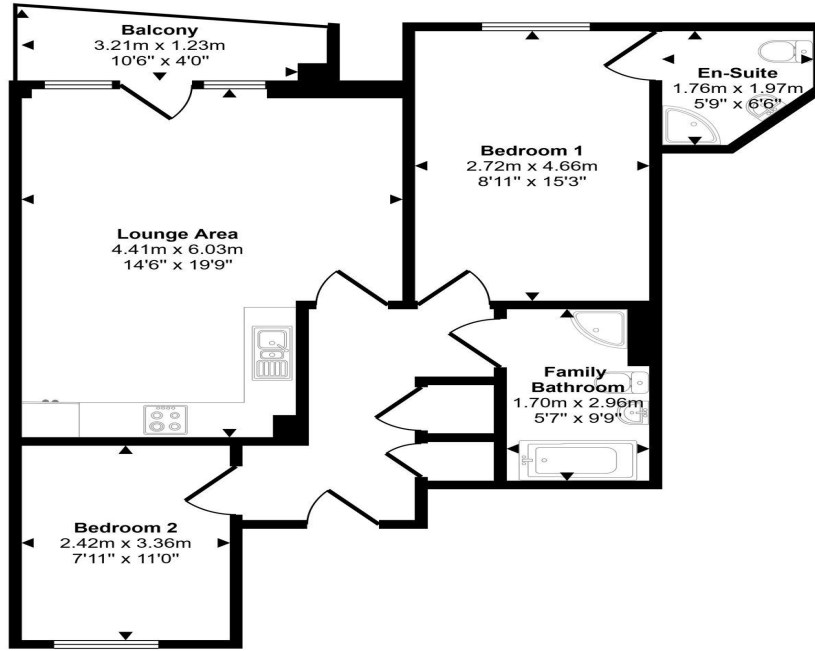
Four piece suite comprising a panelled bath, pedestal wash basin, corner shower unit with mains fed shower, mirrored wall panel, heated towel rail, part tiled, motion operated light



## Balcony



Approx Gross Internal Area  
68 sq m / 732 sq ft



Floorplan

This floorplan is only for illustrative purposes and is not to scale. Measurements of rooms, doors, windows, and any items are approximate and no responsibility is taken for any error, omission or mis-statement. Icons of items such as bathroom suites are representations only and may not look like the real items. Made with Made Snappy 360.

Energy Efficiency Rating		
	Current	Potential
<i>Very energy efficient - lower running costs</i>		
(92-100) <b>A</b>		
(81-91) <b>B</b>		
(69-80) <b>C</b>	73	73
(55-68) <b>D</b>		
(39-54) <b>E</b>		
(21-38) <b>F</b>		
(1-20) <b>G</b>		
<i>Not energy efficient - higher running costs</i>		
<b>England, Scotland &amp; Wales</b>	EU Directive 2002/91/EC	

Worsdell Drive, Ochre Yards, Gateshead, Tyne and Wear, NE8 2DA

Contact your local branch today for more information on this property:

**27-28 Tuesday Market Place, King's Lynn, Norfolk, PE30 1JJ,**  
**TBC<http://www.norfolkpropertyauctions.com>**

These particulars, whilst believed to be accurate are set out as a general outline only for guidance and do not constitute any part of an offer or contract. Intending purchasers should not rely on them as statements of representation of fact, but must satisfy themselves by inspection or otherwise as to their accuracy. No person in this firm's employment has the authority to make or give any representation or warranty in respect of the property.

