



2 bed apartment to buy in W2

314 Edgware Road, London, London, W2 1DY

£360,000 Starting Bid

 x 2  x 1  x 1

Tenure

Leasehold

On Street parking

Property features

- ✓ Newly Decorated
- ✓ 2 bedrooms
- ✓ Bright Reception
- ✓ Top Floor
- ✓ EPC Rating D

Key Information

- ✓ Council Tax: Band E
- ✓ EPC Rating: D
- ✓ Heating supply: Gas
- ✓ Electric supply: National Grid
- ✓ Water supply: Direct mains water
- ✓ Mobile signal: Good

Description

A superb location close to London's West End and Paddington, this newly apartment offers bright, convenient living space.

Arrange on the third floor, the property, which has just been completed and renovated by the current owners, offers two double bedrooms, a newly fitted bathroom, a bright open-plan reception, and a contemporary kitchen.

Located just north of Edgware Road and close to the numerous amenities of Marylebone, the apartment provides excellent access to the West End and is central to the West End.

Service Charge - 22% share of Building Insurance (2024 = £645)

Ground Rent £100 pa

EPC - d

Council Tax - Westminster - E

It is a mandatory requirement for a Sales or Lettings Agent to be part of a redress scheme, we have membership with The Property Ombudsman (a Government-approved redress scheme).

Council Tax Band: E

Tenure: Leasehold

Length of Lease: 958

Annual Ground Rent Amount: £100.00

Annual Service Charge Amount: £645.00

Price: Starting Bid £360,000

Property Type: Apartment

Parking: On Street

Year built: 1985

Construction materials: Brick and block

Roofing type: Flat

Risk of floods and or erosion: No

Flooded in last 5 years: No

Flood defences: No

Planning permissions or proposals for development: No

Coalfield or mining area: No

Listed property: No

Conservation area: No

Public rights of way: No

Adaptions for accessibility: No

Restrictions: No

Required access: No

Heating: Gas

Electric: National Grid

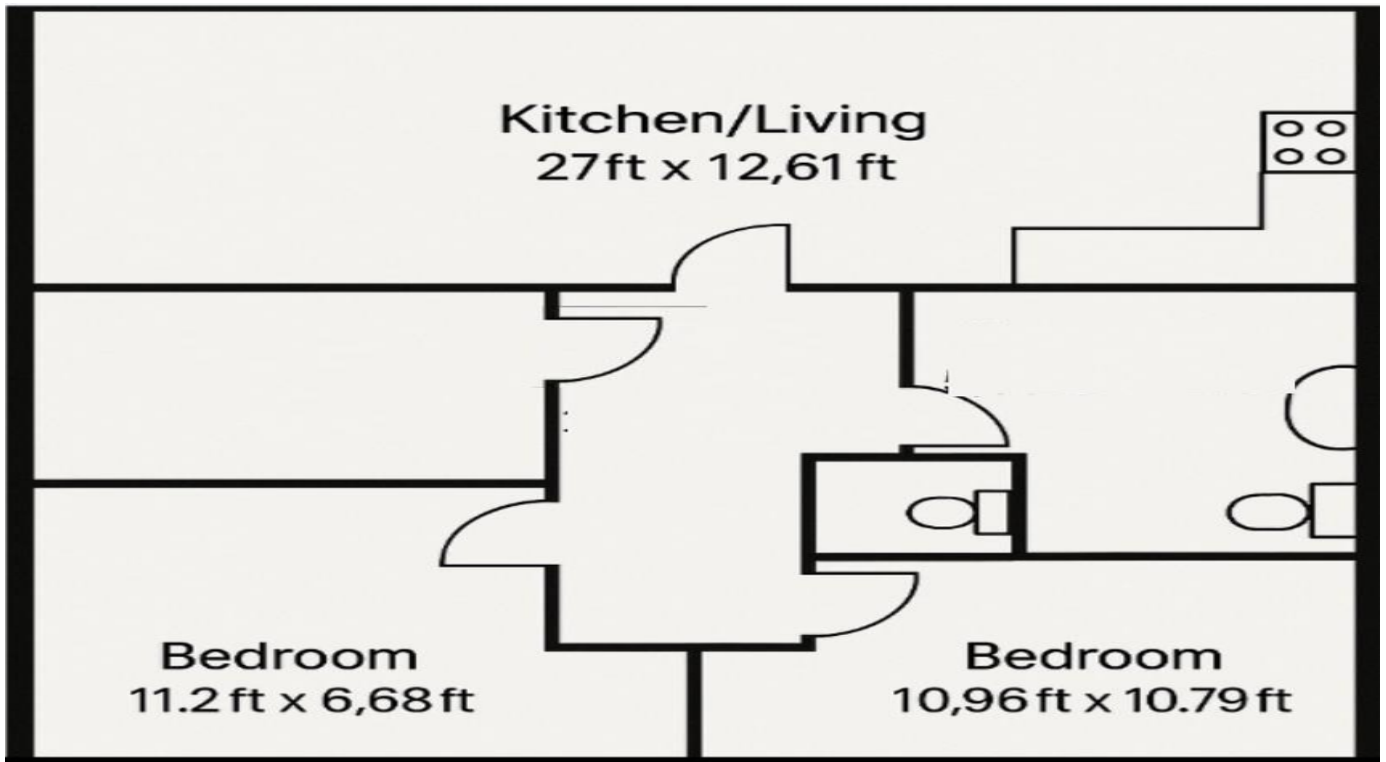
Water: Direct mains water

Water meter: No

Sewerage: Standard UK domestic

Air conditioning: No

Mobile signal coverage: Good



3rd Floor Flat
Edgware Road W2
Total Gross Area : 580 sqft

Energy Efficiency Rating		
	Current	Potential
<i>Very energy efficient - lower running costs</i>		
(92-100) A		
(81-91) B		81
(69-80) C		
(55-68) D	65	
(39-54) E		
(21-38) F		
(1-20) G		
<i>Not energy efficient - higher running costs</i>		
England, Scotland & Wales	EU Directive 2002/91/EC	

314 Edgware Road, London, London, W2 1DY

Contact your local branch today for more information on this property:

27-28 Tuesday Market Place, King's Lynn, Norfolk, PE30 1JJ,
TBC<http://www.norfolkpropertyauctions.com>

These particulars, whilst believed to be accurate are set out as a general outline only for guidance and do not constitute any part of an offer or contract. Intending purchasers should not rely on them as statements of representation of fact, but must satisfy themselves by inspection or otherwise as to their accuracy. No person in this firm's employment has the authority to make or give any representation or warranty in respect of the property.

