



3 bed terraced house to buy in

Worley Mews, Low Fell, Gateshead, Tyne and Wear, NE9 6AQ

£135,000 Starting Bid

🏠 x3 🚿 x1 🚻 x1

Tenure

Freehold

Residents parking

Property features

- ✓ Mid Terrace House
- ✓ Refurbishment Required
- ✓ Three Bedrooms
- ✓ UPVC Double Glazing
- ✓ EPC Rating C

Key Information

- ✓ Council Tax: Band C
- ✓ EPC Rating: C
- ✓ Heating supply: Gas

Description

TO BE SOLD via ONLINE AUCTION. Fees apply.

Tucked away in a quiet courtyard-style setting just off Durham Road, this deceptively spacious mid-terrace house presents an excellent opportunity for those seeking a refurbishment project. The property enjoys a highly convenient location, offering easy access to local amenities, well-regarded schools, and excellent transport links, with regular bus services nearby and the A1 just a short drive away.

The home benefits from UPVC double glazing, gas central heating, and gardens to the side and rear, adding to its appeal and potential. The accommodation comprises an entrance hall, cloaks WC, kitchen, and a generous lounge/diner to the ground floor, while the first floor offers three bedrooms and a family bathroom. Externally there are gardens to the side and rear plus parking for residents.

Council Tax Band: C

Tenure: Freehold

Price: Starting Bid £135,000

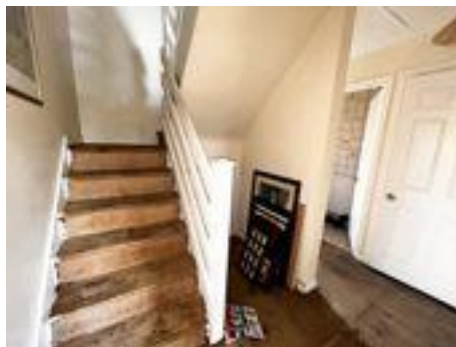
Property Type: Terraced House

Parking: Residents

Heating: Gas

Entrance Hall

UPVC double glazed door, radiator, cupboard, under-stairs cupboard, stair to the first floor



Cloaks WC

WC, wash basin, UPVC double glazed window

Lounge/Dining Room

5.60m x 4.60m (18'4" x 15'1")

Wood type flooring, UPVC double glazed window, patio door to the rear, two radiators



Kitchen

4.40m x 2.60m (14'5" x 8'6")

Base unit with a sink unit, combi boiler, UPVC double glazed window, and door



Landing



Bedroom 1

4.60m x 2.90m (15'1" x 9'6")

UPVC double glazed window, radiator



Bedroom 2

4.60m x 2.60m (15'1" x 8'6")

UPVC double glazed window, radiator, mirrored sliding wardrobe



Bedroom 3

3.80m x 2.60m (12'5" x 8'6")

UPVC double glazed window, radiator



Bathroom

1.70m x 3.00m (5'6" x 9'10")

WC, bath, wash basin, UPVC double glazed window, radiator, tiled floor

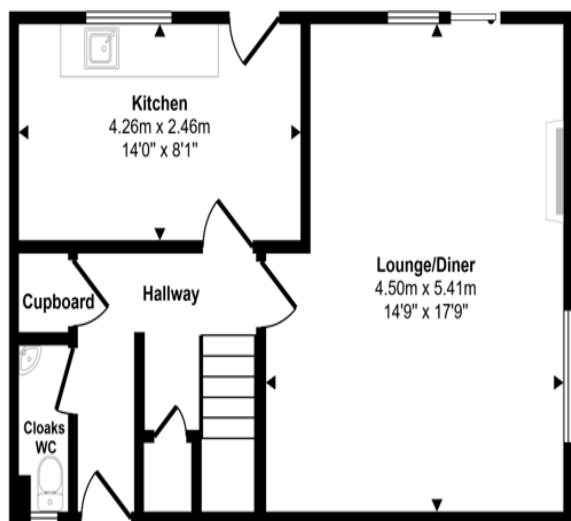


External

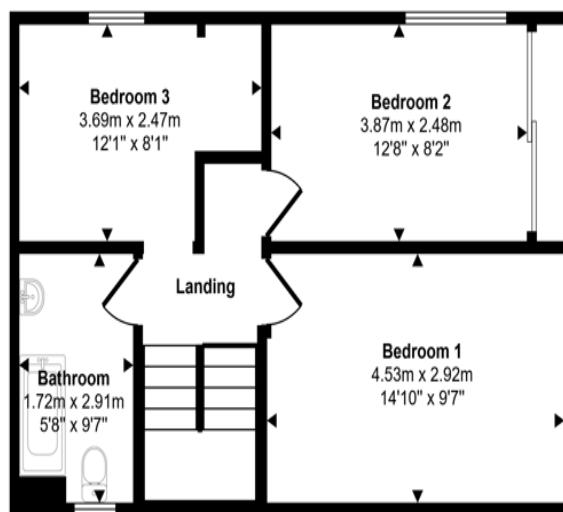
Gardens to the side and rear, residents parking



Approx Gross Internal Area
91 sq m / 976 sq ft



Ground Floor
Approx 45 sq m / 483 sq ft



First Floor
Approx 46 sq m / 493 sq ft

This floorplan is only for illustrative purposes and is not to scale. Measurements of rooms, doors, windows, and any items are approximate and no responsibility is taken for any error, omission or mis-statement. Icons of items such as bathroom suites are representations only and may not look like the real items. Made with Made Snappy 360.

Energy Efficiency Rating		
	Current	Potential
<i>Very energy efficient - lower running costs</i>		
(92-100) A		
(81-91) B		
(69-80) C	71	76
(55-68) D		
(39-54) E		
(21-38) F		
(1-20) G		
<i>Not energy efficient - higher running costs</i>		
England, Scotland & Wales	EU Directive 2002/91/EC	

Worley Mews, Low Fell, Gateshead, Tyne and Wear, NE9 6AQ

Contact your local branch today for more information on this property:

**27-28 Tuesday Market Place, King's Lynn, Norfolk, PE30 1JJ,
TBChttp://www.norfolkpropertyauctions.com**

These particulars, whilst believed to be accurate are set out as a general outline only for guidance and do not constitute any part of an offer or contract. Intending purchasers should not rely on them as statements of representation of fact, but must satisfy themselves by inspection or otherwise as to their accuracy. No person in this firm's employment has the authority to make or give any representation or warranty in respect of the property.

