



4 bed detached house to buy in

Meadow Vale, Shiremoor, Newcastle upon Tyne, Tyne and Wear, NE27 0BD

£370,000

 x4  x2  x2

Tenure

Freehold

Property features

- ✓ Detached
- ✓ Four bedrooms
- ✓ Off street parking
- ✓ Stunning garden
- ✓ Excellent transport links

Garage parking

Garden

Key Information

- ✓ Council Tax: Band D
- ✓ Heating supply: Gas

Description

Modern four-bedroom detached home situated in the ever-popular Meadow Vale development. Ideally located for easy access to the Northumberland Park rail line, local shops, and the A19, making it perfect for commuters and families alike.

The property has been recently decorated throughout and features a newly fitted family bathroom and en-suite, offering a fresh and contemporary feel.

Externally, the home benefits from off-street parking via both a private driveway and garage, as well as the added advantage of an electric vehicle charging point. The rear garden is absolutely stunning, beautifully maintained, and includes a dedicated seating area—perfect for relaxing or entertaining.

Council Tax Band: D

Tenure: Freehold

Price: £370,000

Property Type: Detached House

USPs: Garden

Parking: Garage, Driveway & Garage

Heating: Gas

Lounge

4.98m x 3.10m (16'4" x 10'2")

Bright and spacious lounge with a beautiful bay window, allowing plenty of natural light, and a charming feature fireplace



Kitchen

Stylish open-plan kitchen/diner complete with integrated appliances, patio doors providing seamless access to the garden, and generous space for a dining table ideal for entertaining.



Kitchen Photo Two

4.88m x 2.87m (16'0" x 9'4")



Dining Area

3.15m x 3.15m (10'4" x 10'4")



Main bedroom

4.29m x 3.12m (14'0" x 10'2")

Impressive main bedroom offering air conditioning, built-in wardrobes, and direct access to a stylish en-suite



En-suite

Contemporary en-suite featuring a low-level WC, pedestal wash hand basin, shower cubicle, and heated radiator



Bedroom Two

3.10m x 2.82m (10'2" x 9'3")

Well proportioned double bedroom featuring two windows that allow plenty of natural light, along with a central heating radiator



Bedroom Three

3.18m x 2.79m (10'5" x 9'1")

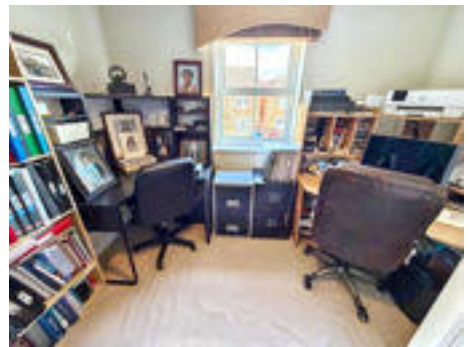
Comfortable third bedroom with a double glazed window and central heating radiator



Bedroom Four

3.05m x 2.67m (10'0" x 8'9")

A versatile fourth bedroom, currently utilised as a home office, providing flexible accommodation ideal for modern living



Bathroom

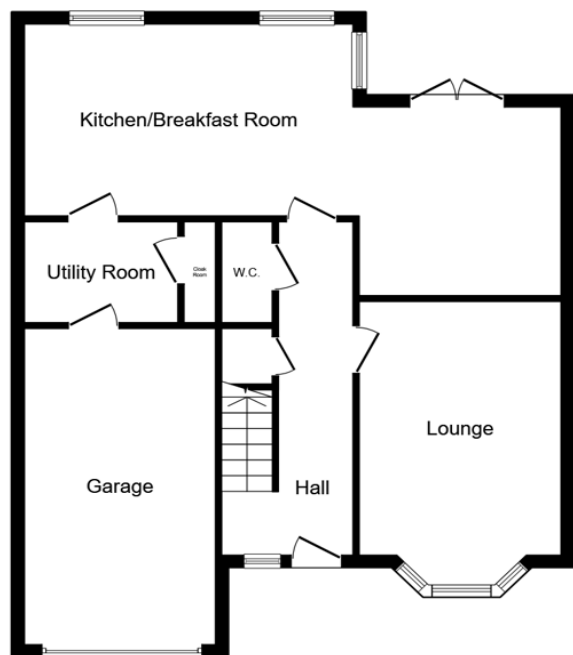
Well-appointed family bathroom featuring a panelled bath with shower over, low-level WC, double glazed window, and radiator



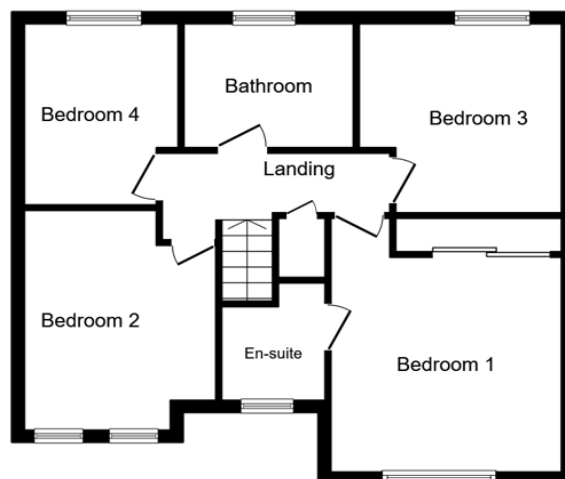
Garden

Beautifully landscaped garden featuring a stylish decked seating area, perfect for outdoor dining and relaxation





Ground Floor



First Floor

This floor plan is for illustrative purposes only. It is not drawn to scale. Any measurements, floor areas (including any total floor area), openings and orientations are approximate. No details are guaranteed, they cannot be relied upon for any purpose and do not form any part of any agreement. No liability is taken for any error, omission or misstatement. A party must rely upon its own inspection(s). Powered by www.Propertybox.io

Meadow Vale, Shiremoor, Newcastle upon Tyne, Tyne and Wear, NE27 0BD

Contact your local branch today for more information on this property:

27-28 Tuesday Market Place, King's Lynn, Norfolk, PE30 1JJ,

TBC<http://www.norfolkpropertyauctions.com>

These particulars, whilst believed to be accurate are set out as a general outline only for guidance and do not constitute any part of an offer or contract. Intending purchasers should not rely on them as statements of representation of fact, but must satisfy themselves by inspection or otherwise as to their accuracy. No person in this firm's employment has the authority to make or give any representation or warranty in respect of the property.

