



2 bed semi-detached house to buy in SR8

Thames Road, Peterlee, Durham, SR8 1DT

£78,500

🛏 x 2 🚿 x 1 🚗 x 1

Tenure Size

Freehold 893 sq ft / 83 sq m

Property features

- ✓ No onward chain
- ✓ Two spacious double bedrooms
- ✓ Modern, well-appointed bathroom
- ✓ Larger-than-average lounge
- ✓ EPC Rating D

Driveway & Garage parking

Garden

Key Information

- ✓ Council Tax: Band A
- ✓ EPC Rating: D
- ✓ Heating supply: Gas
- ✓ Electric supply: National Grid
- ✓ Water supply: Direct mains water

Description

Pattinson Estate Agents are pleased to present to the sales market this well-proportioned two-bedroom semi-detached home, offered with no onward chain and ideally situated in a popular central Peterlee location, making it a fantastic opportunity for first-time buyers, investors, or those looking to downsize.

Internally, the property offers generous and versatile living accommodation throughout. There are two spacious double bedrooms, both well-presented and suitable for family living, guest accommodation, or home working needs.

The home features a modern, well-appointed bathroom finished with contemporary fittings, complementing the overall style of the property.

A larger-than-average lounge provides an excellent living space, ideal for relaxing or entertaining, while the kitchen and dining area offers a practical and sociable layout perfect for everyday family life. In addition, there is a separate utility room providing further convenience and storage.

Externally, the property continues to impress with an attached garage, private driveway providing off-street parking, and a well-maintained rear garden offering outdoor space for leisure and entertaining.

For investors, the property presents a strong opportunity with an achievable rental income of approximately £725 PCM, delivering an estimated annual rental yield of 11.1%, making it a highly attractive buy-to-let prospect.

Early viewing is strongly recommended to fully appreciate the space, location, and potential this fantastic home has to offer.

Council Tax Band: A

Tenure: Freehold

Price: £78,500

Property Type: Semi-detached house

Build Size: 83 sq m

USPs: Garden, Chain free

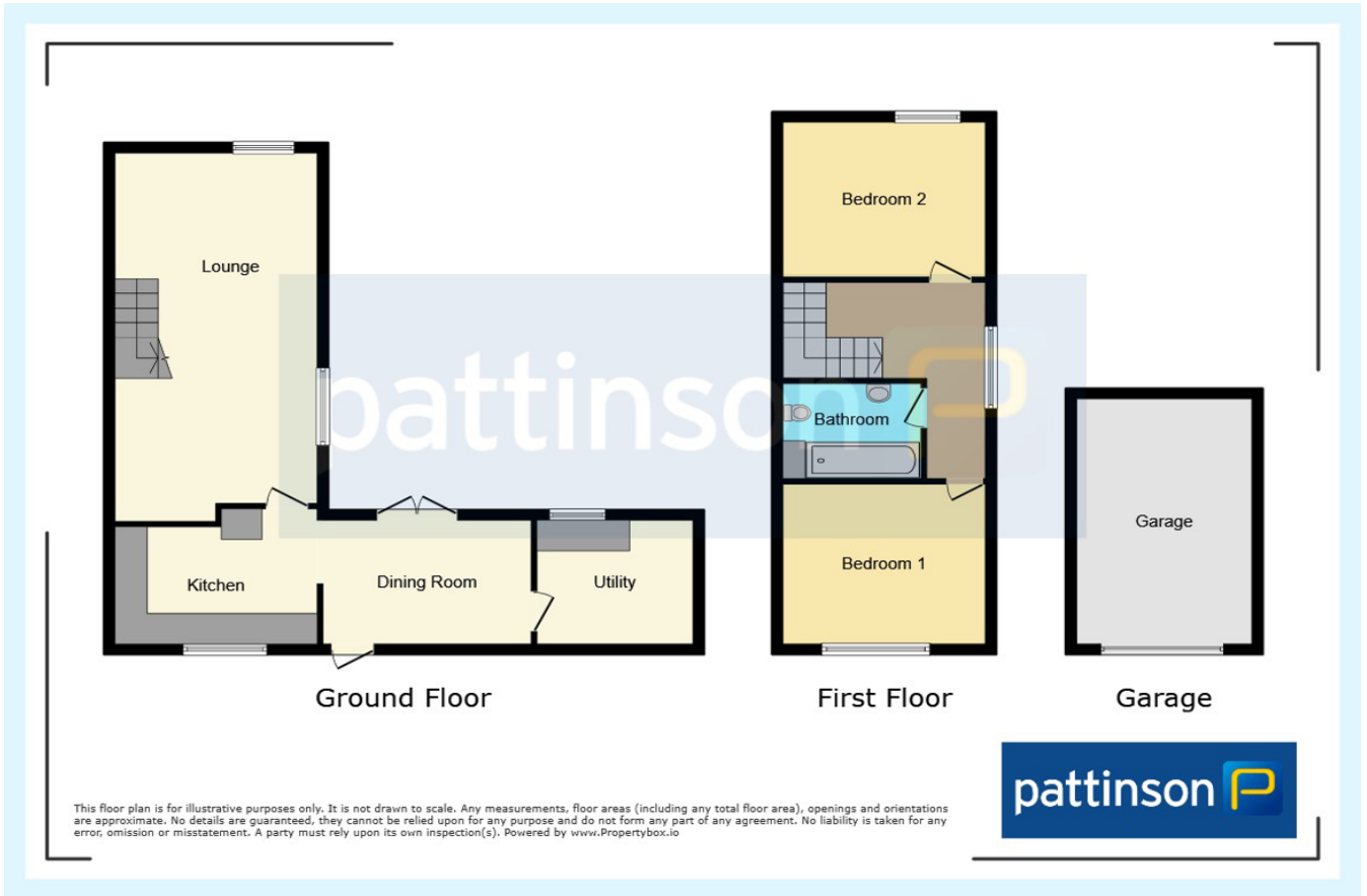
Parking: Driveway & Garage

Heating: Gas

Electric: National Grid

Water: Direct mains water

Sewerage: Standard UK domestic



Energy Efficiency Rating		
	Current	Potential
<i>Very energy efficient - lower running costs</i>		
(92-100) A		
(81-91) B		83
(69-80) C		
(55-68) D	61	
(39-54) E		
(21-38) F		
(1-20) G		
<i>Not energy efficient - higher running costs</i>		
England, Scotland & Wales	EU Directive 2002/91/EC	

Thames Road, Peterlee, Durham, SR8 1DT

Contact your local branch today for more information on this property:

27-28 Tuesday Market Place, King's Lynn, Norfolk, PE30 1JJ,
TBC<http://www.norfolkpropertyauctions.com>

These particulars, whilst believed to be accurate are set out as a general outline only for guidance and do not constitute any part of an offer or contract. Intending purchasers should not rely on them as statements of representation of fact, but must satisfy themselves by inspection or otherwise as to their accuracy. No person in this firm's employment has the authority to make or give any representation or warranty in respect of the property.

